



### **Construction Update – 27<sup>th</sup> October 2017**

We would like to notify you of the commencement of High Voltage Infrastructure works to Central Avenue West. The works will be staged in the following sequence:

#### **Stage 1**

- Establish the work zone
- Investigate & redirect existing in-ground services
- Construct new in-ground concrete pit

#### **Stage 2**

- Trenching and installation of new incoming & outgoing in-ground conduits

#### **Stage 3**

- Ausgrid cable installation
- Commissioning

Stage 1 works will be commencing on Monday 30<sup>th</sup> October and will take approximately 5 weeks to complete. These works will involve the barricading of sections of Central Ave West roadway and footpath. (refer below diagram). It will also require the closure of the 2 x Loading Bay spaces immediately to the East of the Media City Loading Dock entrance.

Access to the Loading Dock and the Carpark to Media City will not be affected.

We apologise for any disruption caused during these works. If you have any questions or if you require more information, please contact [atp.communicationsf@mirvac.com](mailto:atp.communicationsf@mirvac.com) or call 1800 870 549.

Kind regards, Kim

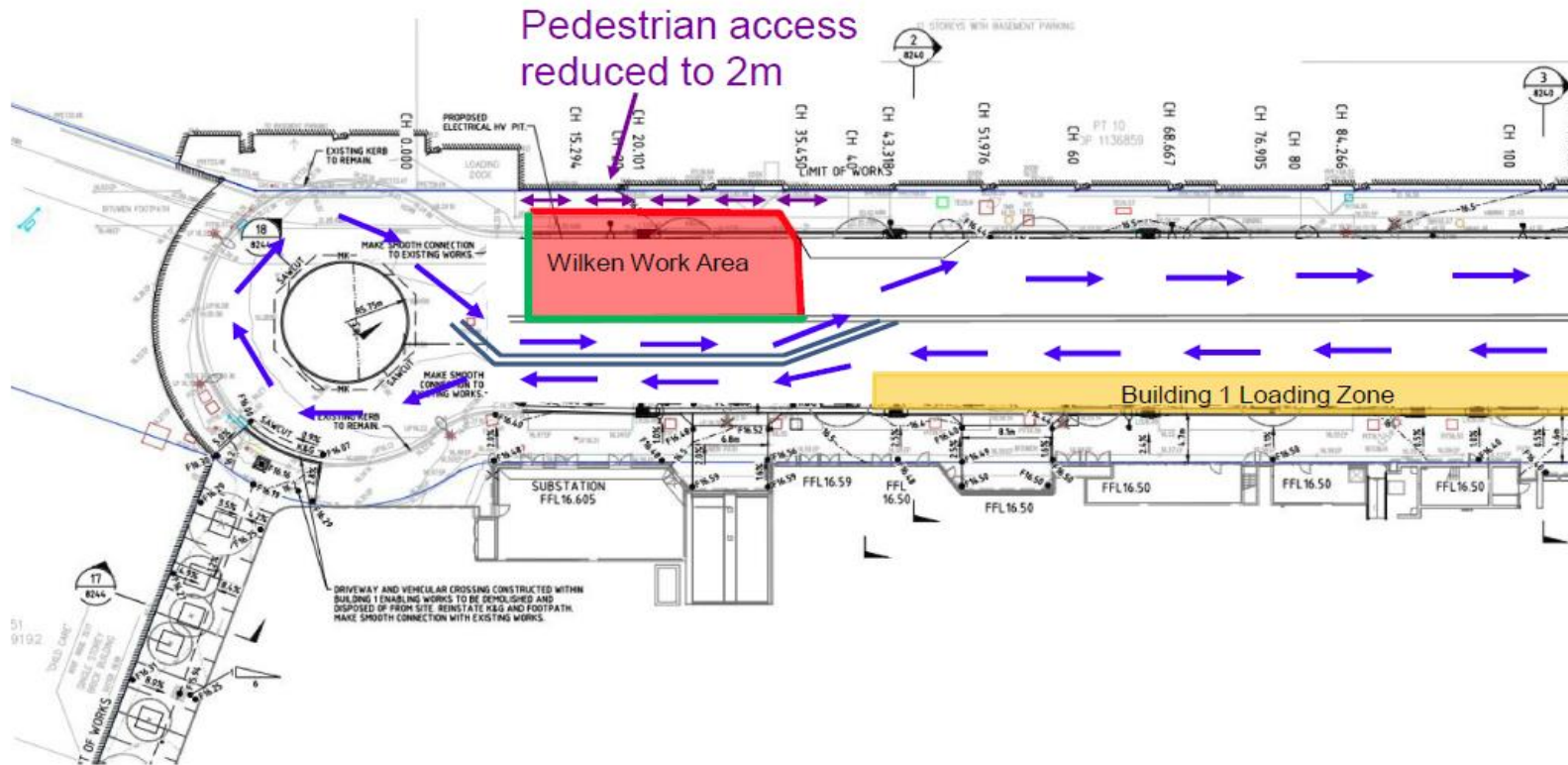
**Kim Elliott**  
ATP Communications Specialist  
Office and Industrial

T +61 2 9080 8125  
2 Locomotive St, Eveleigh NSW 2015



*Reimagine urban life*

- Compound to be Established on Monday 30th November
- Duration of works is approx. 5 weeks



Concrete Jersey Kerbs

Water Filled Barriers